



Mobiscope

**Video from webcams on mobile - for
home surveillance or just for fun!**

Mobiscope Desktop for Mac OS Getting Started Guide

Introduction

Mobiscope software consists of two components: the desktop part and the client module.

- The desktop part (Mobiscope Desktop) should be installed on your computer.
- The client module should be installed on your mobile device.

To view your web cameras connected to the computer through your handheld, you should install both these components.

Appendix A provides the information about downloading and installation of Mobiscope Client on your mobile device. In every Mobiscope Client you will also find directions on how to work with a mobile client.

1. Installing Mobiscope Desktop on a computer

Mobiscope Desktop allows you to view up to four cameras (both USB cameras connected to your Mac and network cameras) on your mobile device. You should install the desktop part of Mobiscope on all computers with cameras which you're going to use. Run the installation file **mobiscope_desktop_mac.dmg** and follow the instructions of the installation wizard to completely install the product.

You can download this file from our site: www.mobiscope.com/download

Note: Mobiscope Desktop works on Intel-based Macs only.

If your computer isn't registered in the Mobiscope Online Service, you should fill the registration form after the Desktop installation.

In order to view your camera remotely from your mobile device you need to register. Please, enter your name and email to get the Mobiscope computer number.

Your name

Email

Retype the email

Password

Cancel Register

Note: Please specify existing email address in registration form. You will receive automatic notification about registration to this email address. You should confirm or cancel your registration in 'Mobiscope Desktop', by choosing one of the web links in this email.

In the Mobiscope Desktop each registered computer has a special computer number assigned at registration in the service. If connection to the Mobiscope Online Service has established and the registration was completed successfully, the unique computer number will be assigned to your computer. You will see this number in the top left corner of the application window.

The **Mobiscope Desktop** connects to the Mobiscope Online Service as usual Web browser (using HTTP requests through port 80) and it doesn't require direct access to the computer or other special router settings.

After registration you should add a password which you will use to access your computer with camera connected to it. You can change this password by selecting **Password change** tab in **Preferences** window.


After the installation is successfully completed, start **Mobiscope Desktop**. You can find it in Applications.

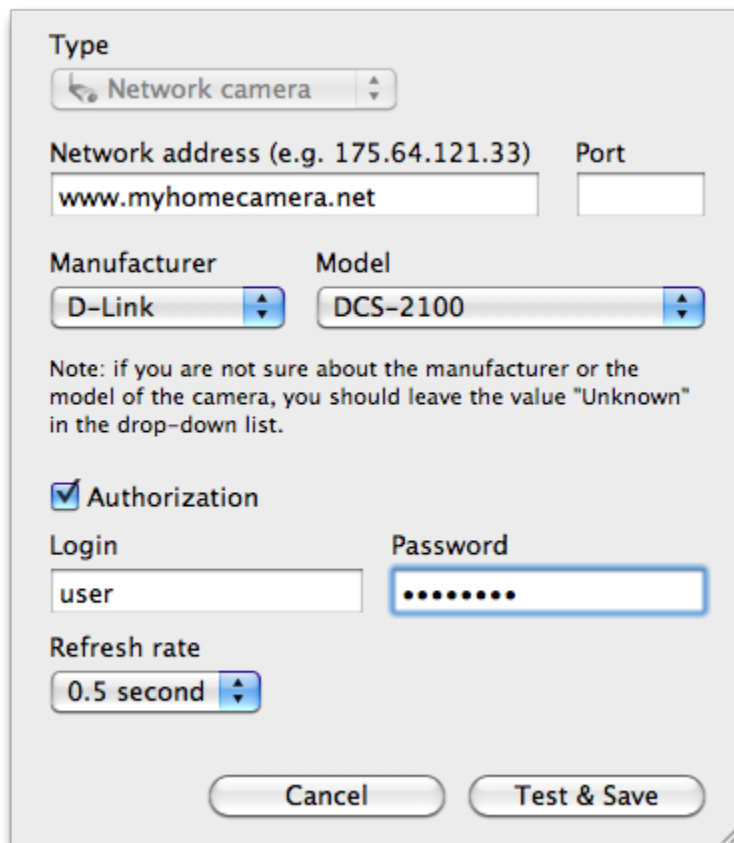
In order to start working with Mobiscope Desktop, you should have Mobiscope Desktop to be running on your computer (it should have 'Online' status in the Desktop).

Note: If you have problems with your web camera, please first check if it is connected to the computer properly and that it is not used by the other application.

2. Viewing cameras and recordings on the desktop

After you install both Mobiscope Desktop and Mobiscope Client you can start viewing your cameras.

To add a camera to the camera viewing area click **Edit cameras** button and press  on the corresponding cell. First of all you should select whether you will add a USB camera or an IP camera and then fill out the form.



Type
Network camera

Network address (e.g. 175.64.121.33) Port
www.myhomecamera.net

Manufacturer Model
D-Link DCS-2100

Note: if you are not sure about the manufacturer or the model of the camera, you should leave the value "Unknown" in the drop-down list.

☒ Authorization
Login Password
user


Refresh rate
0.5 second

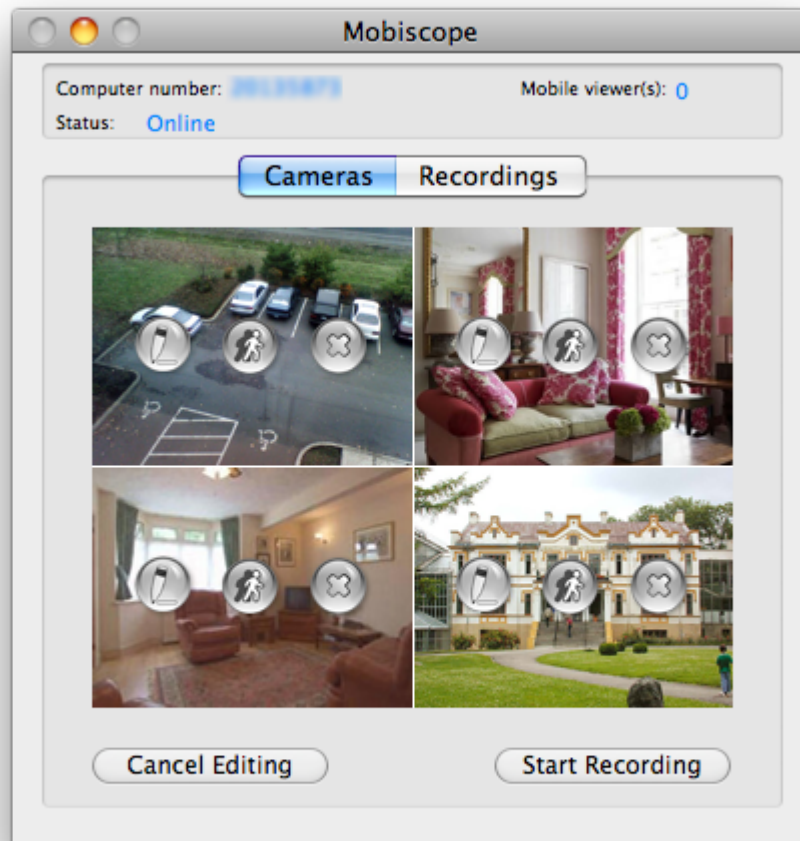
Cancel Test & Save

Note: If you don't know a manufacturer or a model of the camera, leave the value "Unknown" in the drop-down list.

After you enter all information about your camera press **Test & Save** button and the connection to the network camera will be tested.

If the test was not successful you are recommended to get back and edit the camera. For that press **Back to edit** button.

To delete a camera from the camera viewing area click  in the Edit camera mode (press Edit cameras button to turn ON the mode).

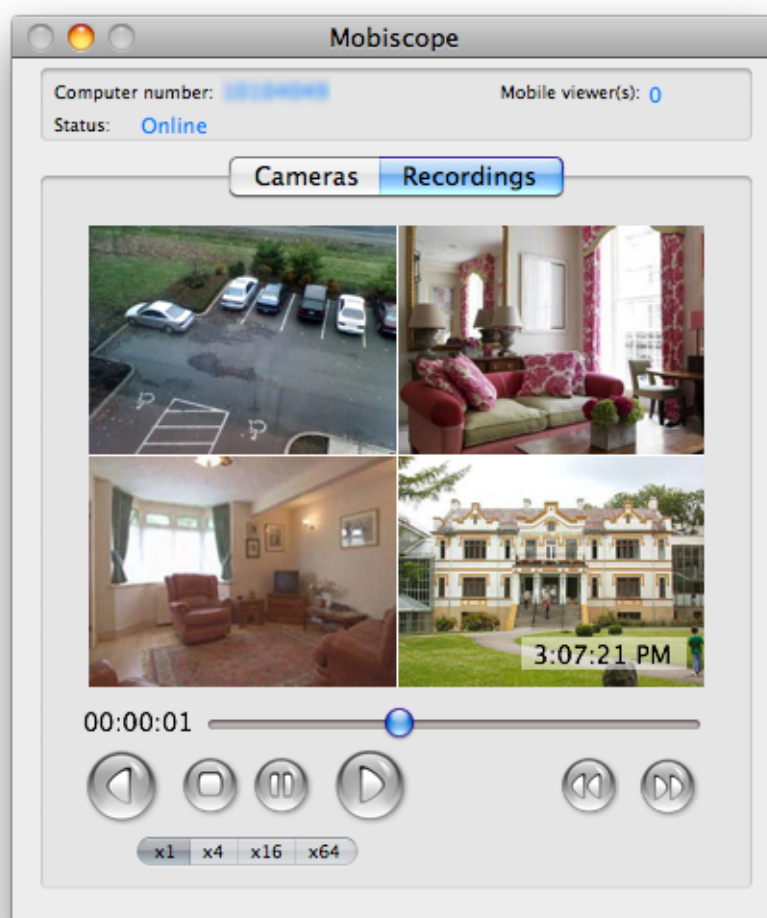
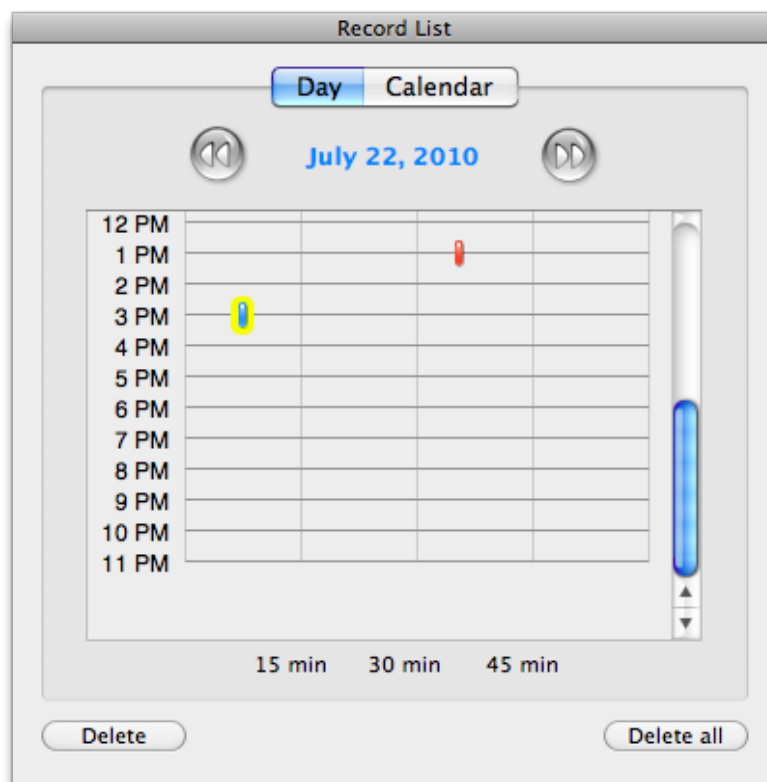


You may switch the view from one camera to the other or view all cameras simultaneously. Click on the camera image to view only this camera. If you click on it once again you'll see all cameras at a time.

You can start/stop recording by pressing the Start/Stop Recording button under the camera image. To view your video recordings click on the Recordings tab and select the date in the calendar. Then point the needed fragment and click Play button in the player window.

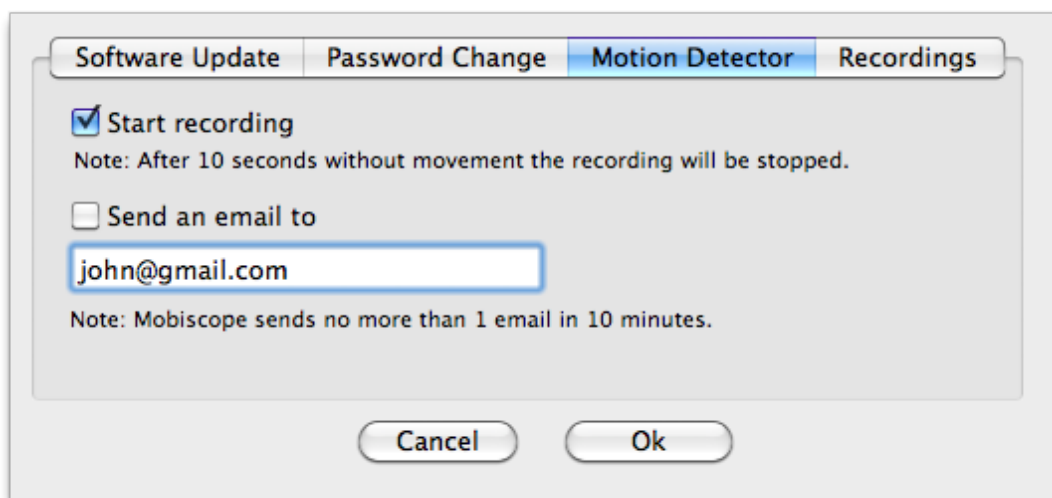
Red time intervals on the timeline represent a record period when a motion was detected and the blue ones represent the record period when there was no considerable motion.

Note: When the used disk space is equal to the disk space limit, the oldest recordings will be replaced with the new ones. You can monitor the used disk space in the Preferences window.




3. Motion Detector

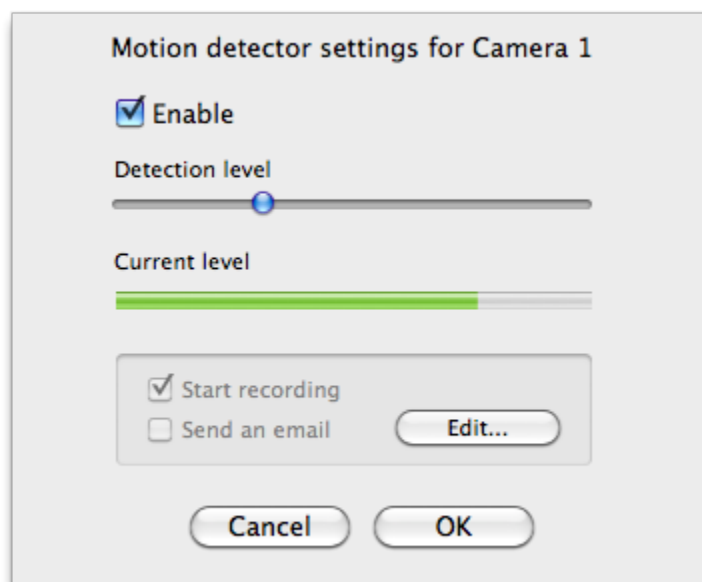
Use motion detection to sift out the most important movements. You may select actions which Mobiscope will perform on motion detection (start recording, send alert by email) in the Preferences window. The picture of movement will be included in the email by default.



Motion detector settings in the Preference window are functioning for all cameras in the camera viewing area.

You may enable and disable motion detector and tune the motion detection level for each camera.

For that click the button  in the Edit camera mode (press Edit cameras button to turn ON the mode).



Appendix A – Downloading Mobiscope Client

Mobiscope Web client

Point any browser to web.mobiscope.com Sign up for Mobiscope Web service and connect to your cameras.

Mobiscope Web service is also available from Apple iPhone and iPod Touch at iphone.mobiscope.com Sing in with your Mobiscope Web account.

Mobiscope Client for Apple iPhone and iPod Touch

1. Go to App Store on your iPhone or iPod Touch and download Mobiscope.
2. Find Mobiscope on iTunes Store and download it to your computer. Then connect your iPhone or iPod Touch to the computer and iTunes will sync applications automatically.

Mobiscope Client for Android device

Point the browser on your mobile to android.mobiscope.com

Sign up for Mobiscope for Android devices online service and connect to your cameras.

Mobiscope Client for BlackBerry handheld

1. Point your BlackBerry browser to bb.mobiscope.com. Scroll down to highlight **Download** and select **Get Link** from the menu. Download the client and reboot your device.
2. If for some reason you can't download the client module directly, download Mobiscope Client (.zip file) from www.mobiscope.com/download to your computer. Unzip the file.

Connect your BlackBerry to the computer. Run BlackBerry Desktop Manager on your computer, choose Application Loader, browse into a folder with mobiscope.alx file, select it and start the file uploading. The icon of Mobiscope application appears on your device.

Mobiscope Client for Java-enabled phone and Symbian OS device

1. You can download the client directly to your mobile device. The WAP download location is: wap.mobiscope.com
2. If for some reason you can't download the client module directly, or error occurs at download, you can download Mobiscope Client (.zip file) from our site www.mobiscope.com/download

Mobiscope Client for Windows Mobile device

1. Download the client from wm.mobiscope.com directly to your mobile device and install it.
2. If for some reason you can't download the client module directly, download Mobiscope Client (.exe file) from www.mobiscope.com/download to your computer. Connect your mobile device to the computer and start the program installation. (You need Microsoft ActiveSync to be installed on your computer.

Mobiscope Client for Palm OS device

1. Download Mobiscope Client (.prc file) from www.mobiscope.com/download on your computer.
2. Connect your mobile device to the computer and install Mobiscope using Palm Desktop or the other application for transferring files to Palm.

Support

You can find more information about Mobiscope on our site: www.mobiscope.com

Support form for further assistance: www.mobiscope.com/support