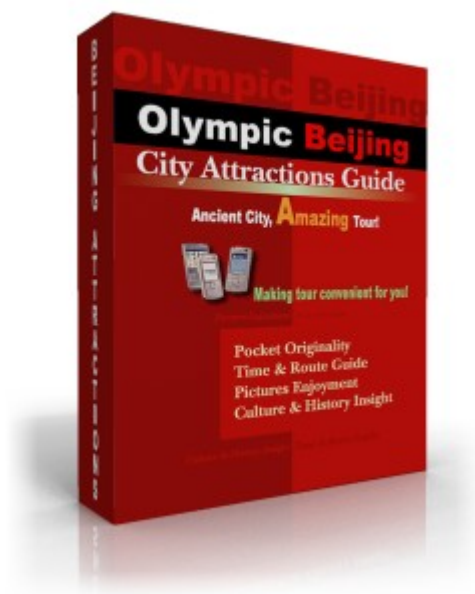


Olympic Beijing City Attraction Guide

User Manual



i-TravelChina Ltd

Home: <http://www.i-travelchina.com>

Email: support@i-travelchina.com

Table of Content

Introduction.....	3
Main Features.....	3
Full Edition.....	3
Lite Edition.....	4
Trial Version Limit.....	4
Getting Started.....	5
Installing Olympic Beijing - City Attractions Guide	5
With Nokia PC Suite.....	5
Running Olympic Beijing - City Attractions Guide.....	7
Main Window.....	7
Airscape.....	7
History.....	8
Map.....	9
Time & Route.....	10
Inside sights.....	11
History of inside sights.....	11
Pictures of each inside sight	12

Introduction

Beijing, capital of China, is one of the world's great cities, brimming with history and culture. Modern and ancient intermingle in this fascinating metropolis. Eight dynasties had built their capitals here. It accumulates the essence of Chinese culture and forms its particular characteristics. There are many great historical sites in Beijing, including the Forbidden City, and the Great Wall passes nearby. It is a dreaming palace for domestic and foreign tourists. In 2008, as the host of Olympic, Beijing is welcoming tourists across the world.

"Olympic Beijing - City Attractions Guide" ("Beijing Attractions" in short) is a mobile traveling guide specially designed for the convenience of smartphone (such as, Nokia S60, S80, Motorola, Sony-Ericsson, etc) and BlackBerry users. It covers five must-visit attractions in Beijing, and they are Imperial Palace, Temple of Heaven, Summer Palace, Great Wall, and Beihai Park. A full range of tourist information about each attraction, including airdscape, history, map, opening time, travelling routes, and major sights, are provided. With the assistance of "Beijing Attractions", tourists will find all needed information to have an enjoyable visit at Beijing. From reading ancient stories behind each sight and viewing breath-taking pictures from different angle, users will find themselves in a great journey of Chinese culture and history. With all the travel information right at your hand, it's like traveling with your own personal tour guide.

Beautiful and beguiling - discover Beijing with "Olympic Beijing - City Attractions Guide".

Main Features

- Travelling guide for five major attractions in Beijing city: Imperial Palace, Temple of Heaven, Summer Palace, Great Wall, and Beihai Park
- Detailed travelling information including each attraction's airdscape, history, map, opening time & travelling routes, and inside sights
- Convenient map & picture viewing feature adjustable with zoom-in and zoom-out functions support
- Intuitive interface and super easy-to-use for non-professional mobile users
- Full Edition (*with 5 attractions, 51 inside sights, 112 pictures*) & Lite Edition (*with 5 attractions, 23 inside sights, 33 pictures*) available
- Full support for Symbian S60 2nd & 3rd, BlackBerry

● Full Edition (*with 5 attractions, 51 inside sights, 112 pictures*)

Attraction	Sights included
Imperial Palace (12 inside sights, 26 pictures)	Meridian Gate, Gate of Supreme Harmony, Hall of Supreme Harmony, Hall of Central Harmony, Hall of Preserved Harmony, Palace of Celestial Purity, Hall of Celestial and Terrestrial Union,

	Palace of Terrestrial Tranquility, Hall of Mental Cultivation, Nine Dragons Screen Watch Towers, Imperial Garden
Temple of Heaven (10 inside sights, 22 pictures)	Hall of Prayer for Good Harvest, The Circular Mound Altar, Imperial Vault of Heaven, Hall of Abstinence, Echo Wall, Triple Sound Stone/Three Echo Stones, The Seven Star Stones, Nine-Dragon Cypress, Red Stairway Bridge/Vermilion Steps Bridge, Double Ring Longevity Pavilion
Summer Palace(10 inside sights, 22 pictures)	East Palace Gate, Longevity Hill, Kuming Lake West Causeway, Long Corridor, Tower of the Fragrance of the Buddha, Clear and Peaceful Boat, Seventeen-Arch Bridge & South Lake Island, Jade Belt Bridge, Garden of Harmonious Pleasures, Suzhou Street
Great Wall(9 inside sights, 20 pictures)	Badaling Great Wall, Juyongguan Pass, Huanghuacheng Great Wall, Jiankou Great Wall, Mutianyu Great Wall, Gubeikou Great Wall, Jinshanling Great Wall, Simatai Great Wall, Huangyaguan Great Wall
Great Wall(10 inside sights, 22 pictures)	Circular City, Qiongdao Island, Long Corridor, Hao Pu Creek Garden, Huafang Studio, Quiet Heart Studio, Heavenly King Hall, Nine-Dragon Screen, Land of Extreme Happiness, Five-Dragon Pavilions

● ***Lite Edition (with 5 attractions, 23 inside sights, 33 pictures)***

Attraction	Sights included
Imperial Palace (6 inside sights, 8 pictures)	Meridian Gate, Hall of Supreme Harmony, Hall of Central Harmony, Hall of Preserved Harmony, Palace of Celestial Purity, Nine Dragons Screen
Temple of Heaven (5 inside sights, 7 pictures)	Hall of Prayer for Good Harvest, The Circular Mound Altar, Echo Wall, Red Stairway Bridge/Vermilion Steps Bridge, Double Ring Longevity Pavilion
Summer Palace(5 inside sights, 7 pictures)	East Palace Gate, Longevity Hill, Long Corridor, Seventeen-Arch Bridge & South Lake Island, Garden of Harmonious Pleasures
Great Wall(3 inside sights, 5 pictures)	Badaling Great Wall, Huanghuacheng Great Wall, Jiankou Great Wall
Great Wall(4 inside sights, 6 pictures)	Circular City, Qiongdao Island, Quiet Heart Studio, Five-Dragon Pavilions

Trial Version Limit

Trial version of Beijing Attractions can only be used for 10 times. The full function version takes 2MB disk place and the compact one takes about 800KB disk place. You can choose the one best suits your mobile device.

Getting Started

Installing Olympic Beijing - City Attractions Guide

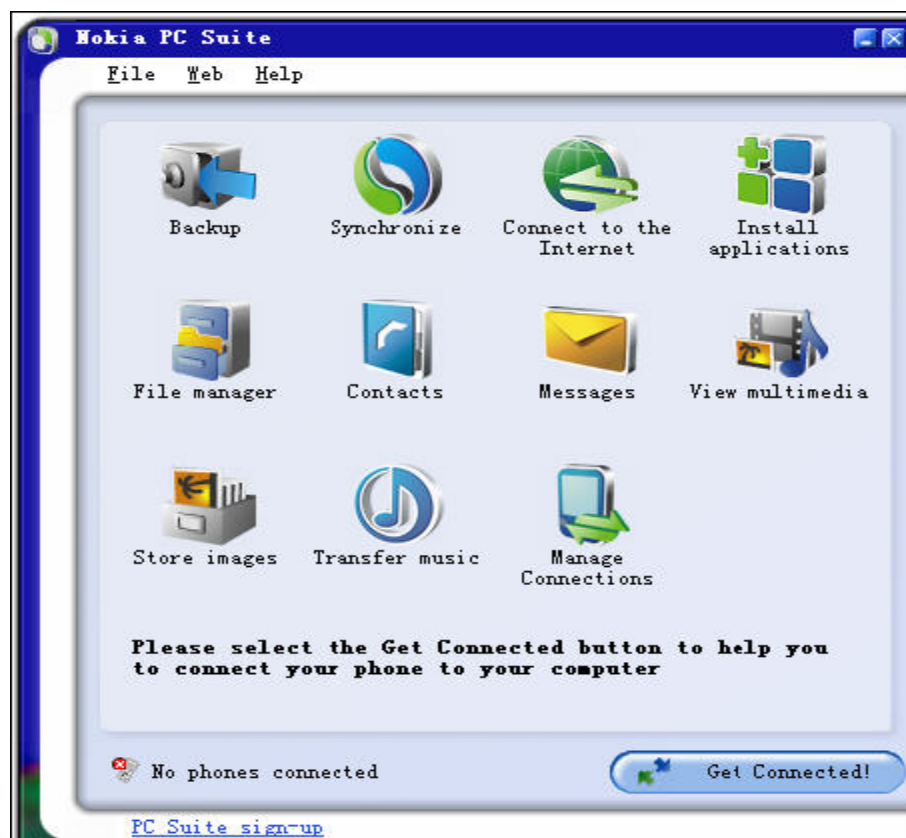
There are 2 easy ways to install Olympic Beijing - City Attractions Guide. If you downloaded the Olympic Beijing - City Attractions Guide software package, you can install it with the Nokia PC Suite, which can be found at <http://europe.nokia.com/A4144903>. The instructions regarding the installing procedures can be found in the Nokia PC Suite's User Guide. This will usually require a PC and a USB data cable (or Bluetooth) between the PC and your Nokia device.

An alternative is to directly upload "Attractions.jar" or "AttractionsCompact.jar" onto your mobile device and lick it to start the installation process.

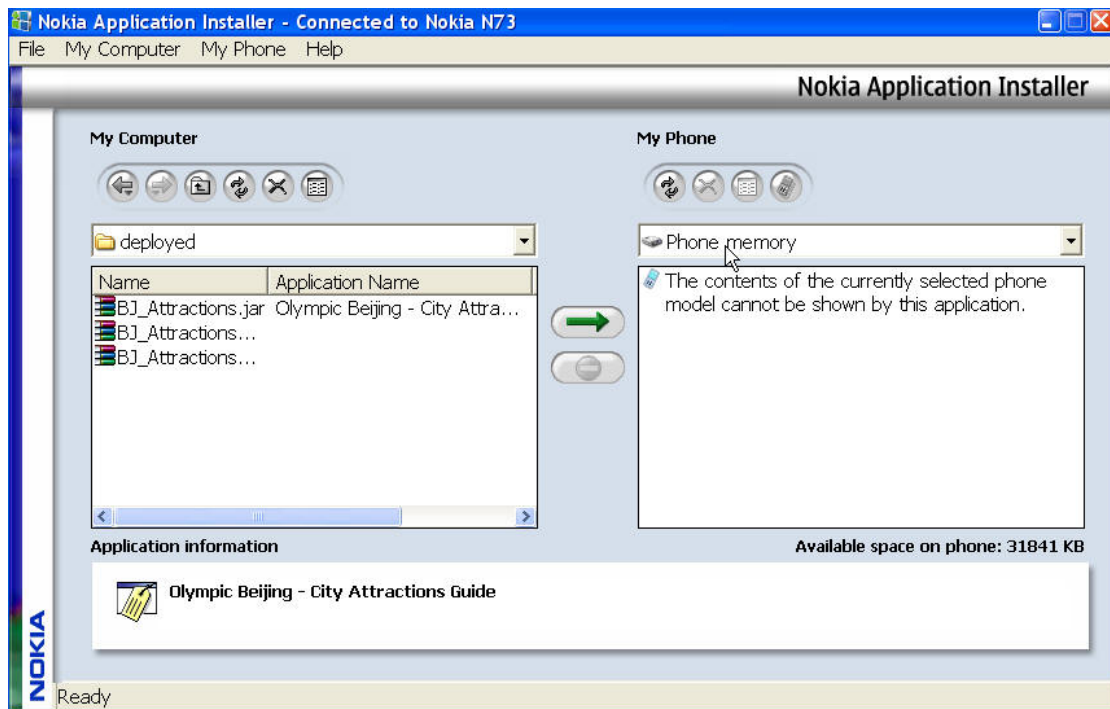
With Nokia PC Suite


The procedures to install Olympic Beijing - City Attractions Guide with the Nokia PC Suite are:

- Start the Nokia PC Suite Desktop Manager.
- Connect your Nokia device to your PC or laptop. This is usually done by connecting the USB cable or through Bluetooth (if supported.)
- Run the Nokia PC Suite.



- Select "Install application".

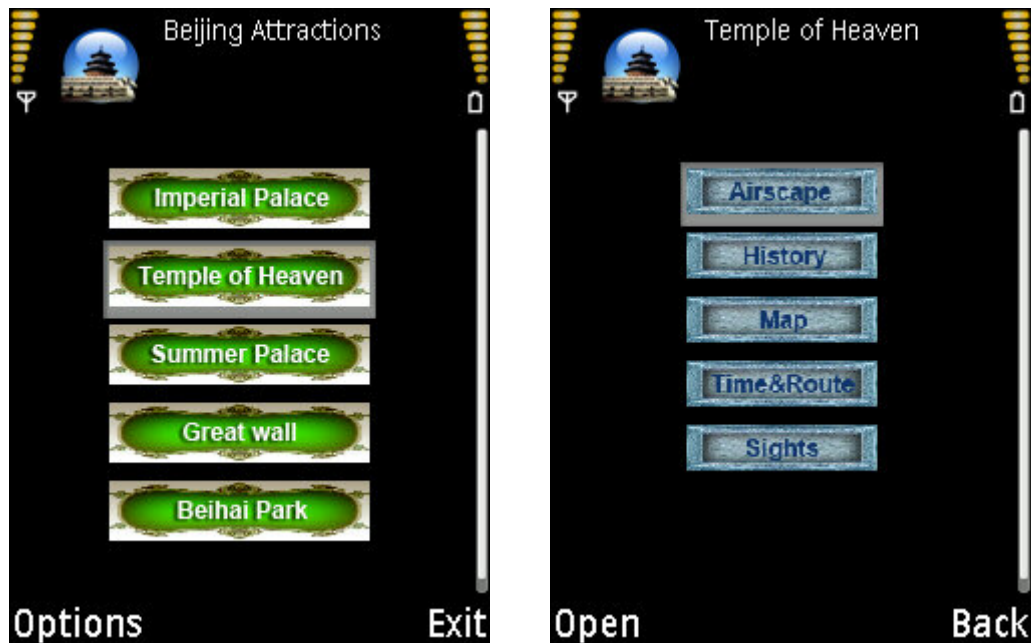


- Select "BJ_Attractions.jar" and click " " to install Olympic Beijing - City Attractions Guide

How to Use Olympic Beijing - City Attractions Guide

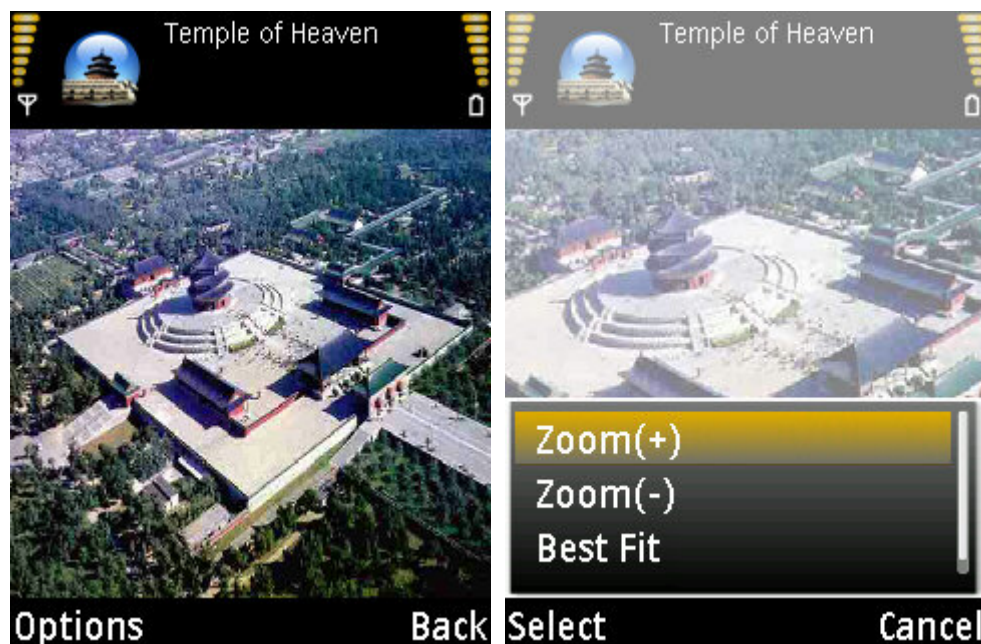
Click the “Olympic Beijing - City Attractions Guide” icon in the main menu to launch our software.

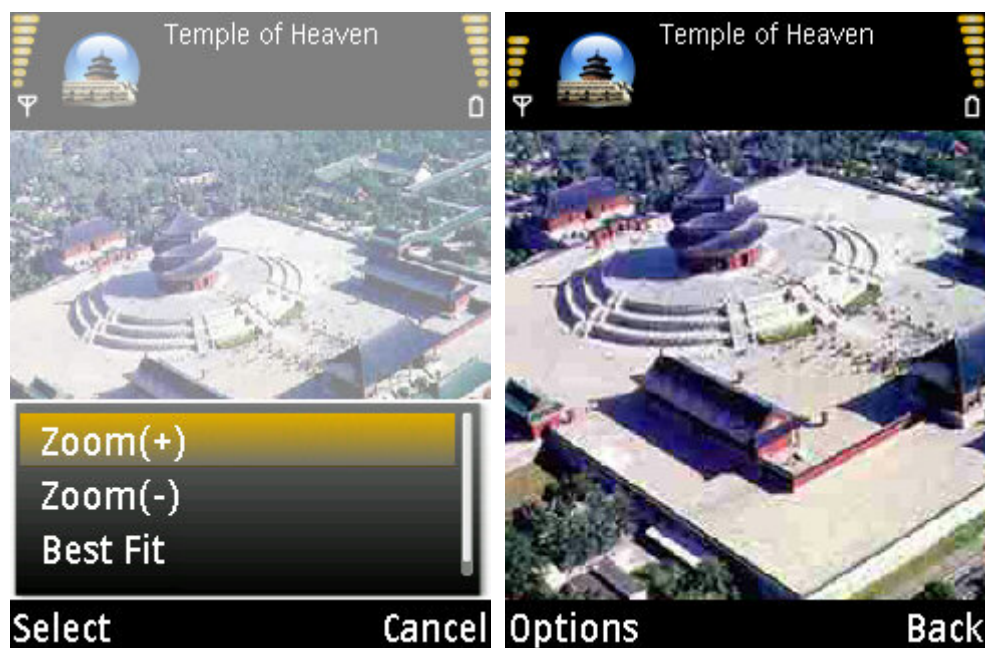
Main Window



The main window shows the most famous five attractions in Beijing. They are Imperial Palace, Temple of Heaven, Summer Palace, Great Wall and Beihai Park. You can select any attraction by selecting the “Open” command in the “Options” menu. There is detailed guide information inside each attraction including each attraction’s airscape, history, map, opening time & travelling routes, and inside sights.

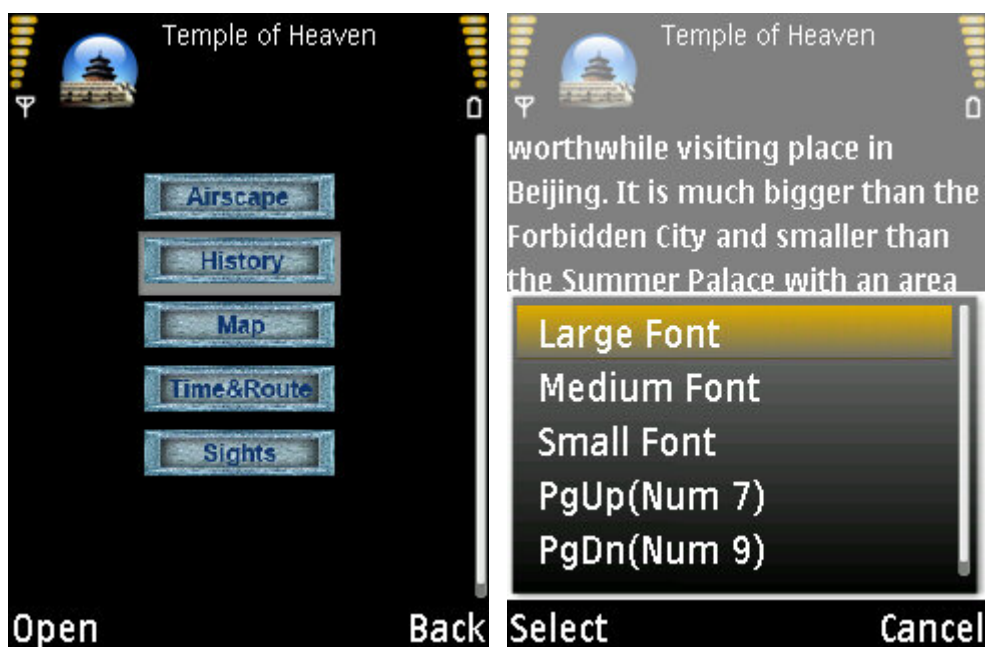
Airscape





By clicking “Airscape” button in the menu, you can get a bird’s-eye view of the selected attraction. You can choose “Zoom (+)” to zoom in the picture and get an enlarged view of the picture, also you can choose “Zoom (-)” to zoom out the picture and get a shrunk view of the spot. By Pressing “up”, “Down”, “Left”, “Right” key of your mobile device, you can easily drag and move the picture across your mobile phone’s screen. Anytime you can select the “Best Fit” command to fit the picture into your mobile phone’s screen.

History

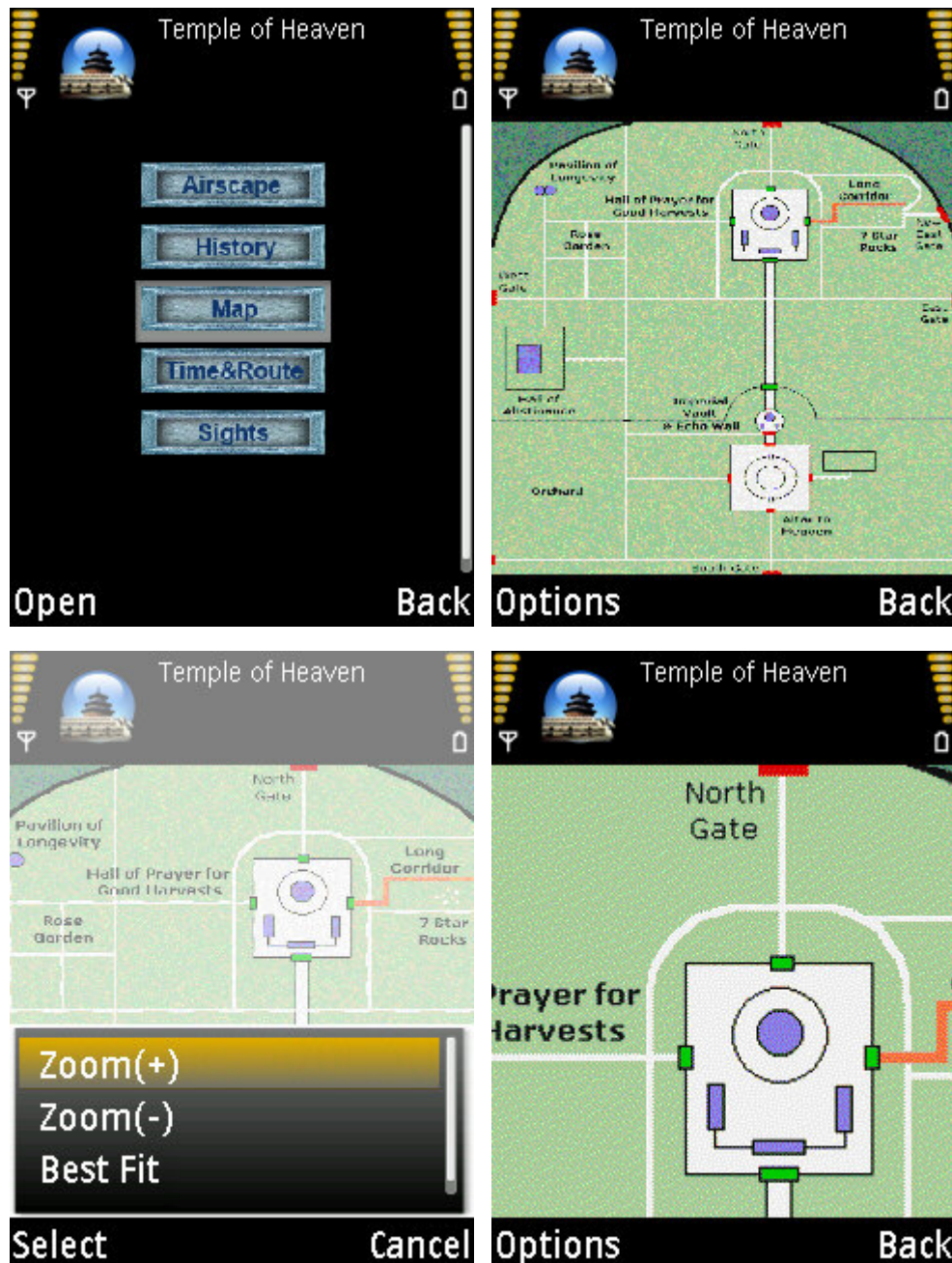


By clicking the “History” button in the menu, you will get a short article of each attraction’s historical background. This historical information can help you better understand each attraction’s history, culture and key characteristics.

When you are reading the articles, you can select the “PgUp” command (Hotkey Num 7)

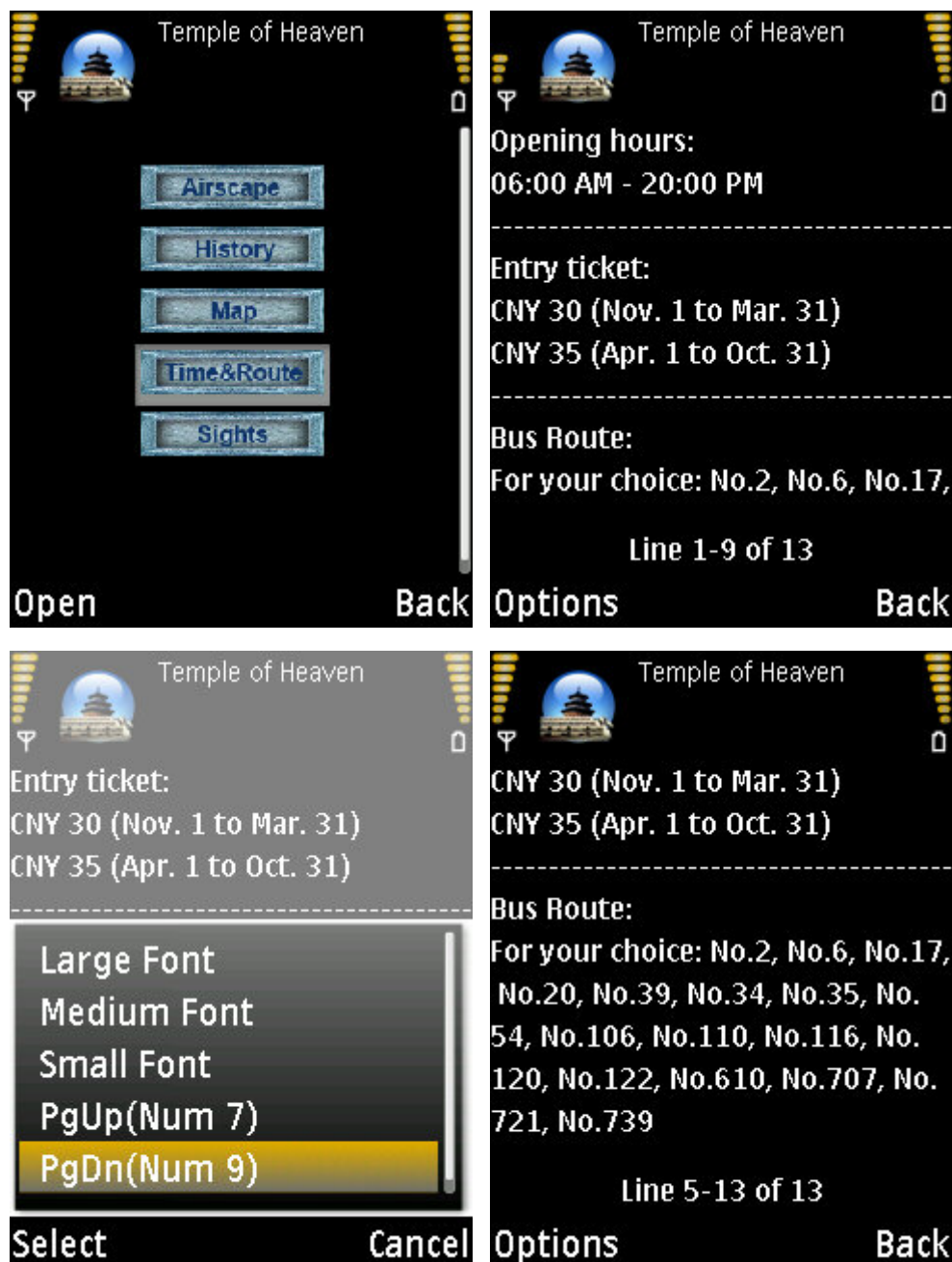
or “PgDn” command (Hotkey Num 9) to quickly switch between each page. You can also change the font size by clicking the “Large Font”, “Medium Font”, “Small Font” command in the menu.

Map



By clicking “Map” button in the menu, you will be able to view a tour map of the selected attraction. The map shows you all detailed information inside each attraction including its local sights, the location of each sight, the route to each sight, etc. By clicking “Up”, “Down”, “Left”, “Right” key, you can locate any point of the map. To get a better view of each map, you can always zoom in and zoom out the picture. You can also select “Best Fit” command to quickly fit the picture into your mobile phone’s screen.

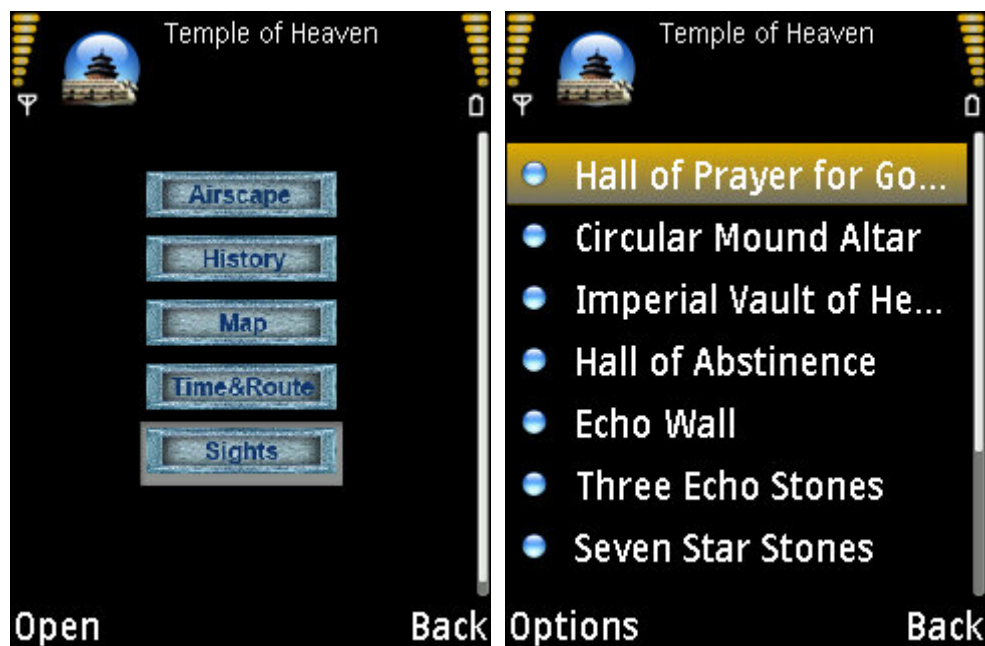
Time & Route



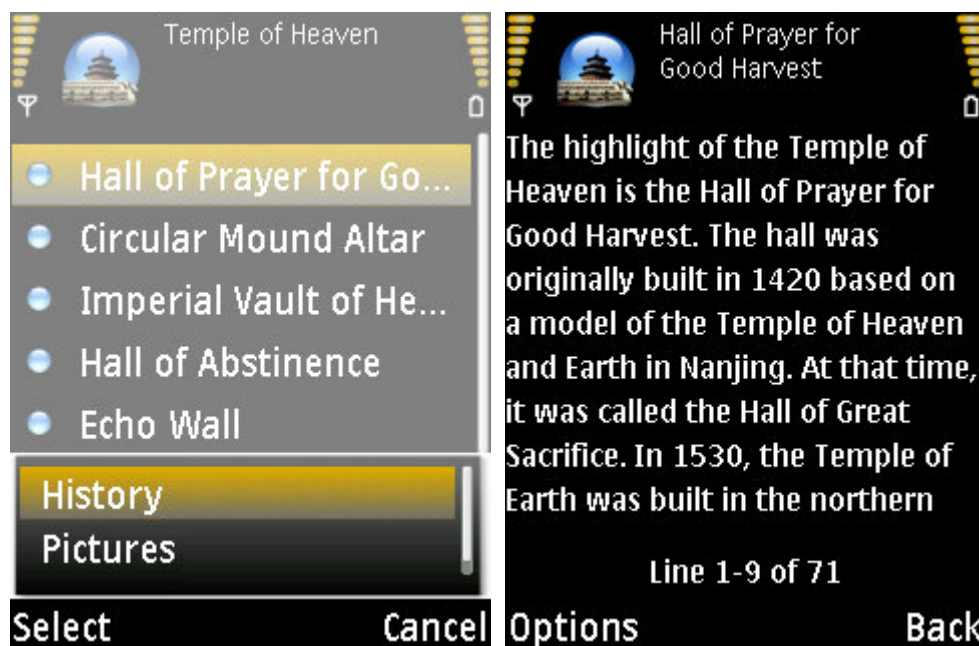
By clicking “Time & Rout” button in the menu, you can get the detailed information of opening time, ticket price and traveling routes for each attraction. You can press “Up” and “Down” key to scroll and read the information. You can also adjust the font size by selecting “Large Font”, “Medium Font”, and “Small Font” options. By selecting “PgUp” and “PgDn”, or by pressing the hotkey “Num 7” and “Num 9”, you can easily switch the screen up and down from page to page.

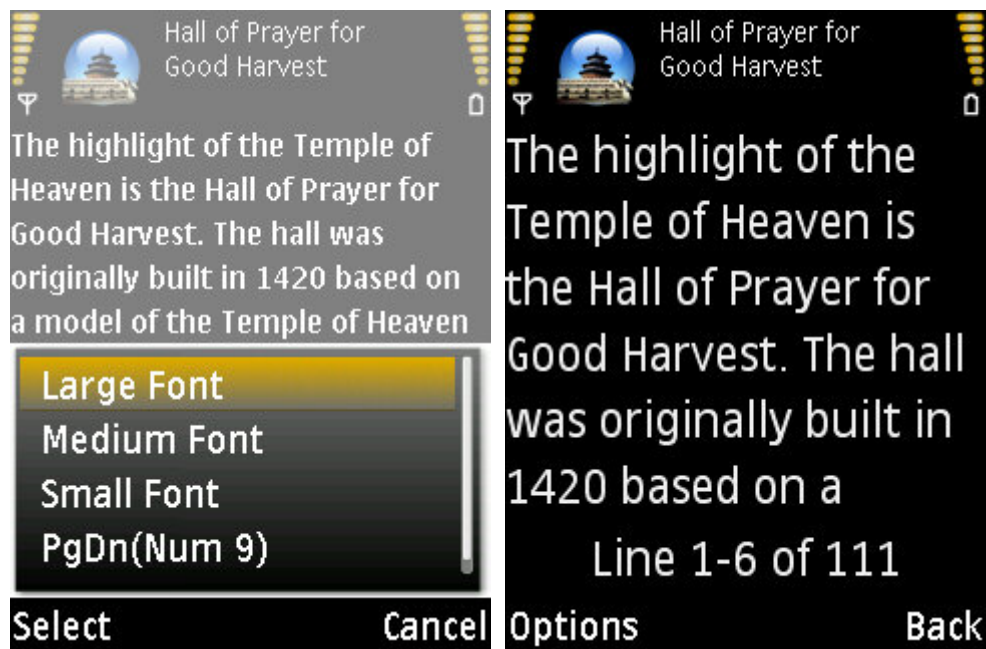
Inside sights

By clicking the “Sights” button in the menu, you will be lead to a detailed list of the most famous sights inside of each attraction.



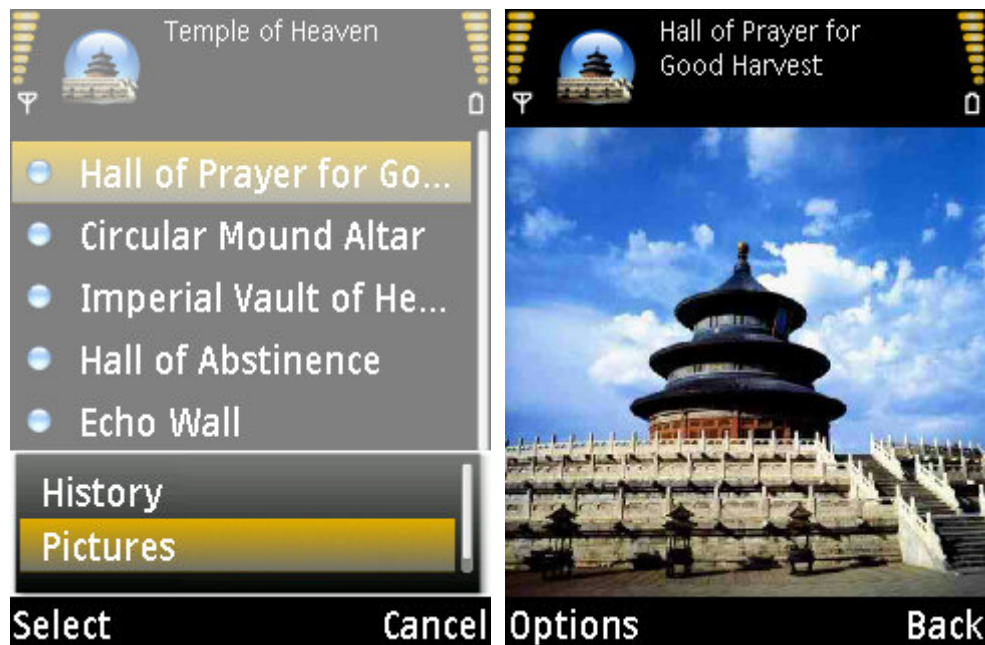
• History of inside sights

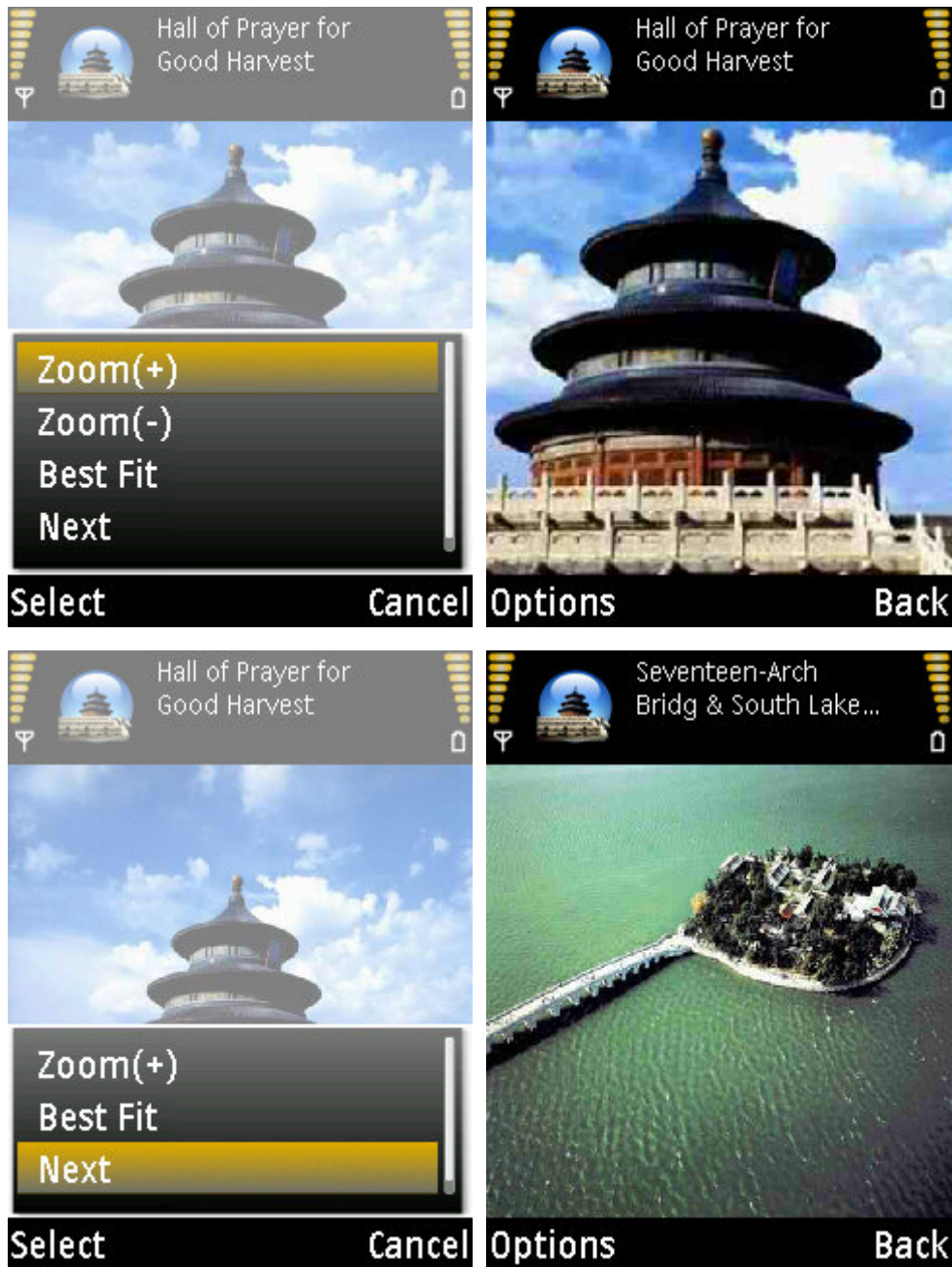




By selecting the “History” command in the menu, you can read a short article about the history background of each sight. The history information will help you have a better understanding of each sight, including when it was firstly built, sight’s ancient stories, what it is famous of, etc.

• **Pictures of each inside sights**





By selecting the “Pictures” command in the menu, you can browse the beautiful pictures of each selected sights. You can click “Previous” or “Next” command to switch between different pictures. You can also zoom in and zoom out the picture by selecting the command “Zoom (+)” and “Zoom (-)” .