

Developed and published by Noumena Innovations (BVI) Ltd.

---

# MGS v2.10

---

Online Games Community  
for Series 60 Devices



## Target Series 60 Devices

### MGS7 is for Series 60 Symbian 7.0 devices

Nokia:	3230 6260 6600 6620 6670 7610
Panasonic:	X700 X800
Samsung:	SGH-D720 SGH-D730

## Introduction

MGS (Magic Game Station) version 2.X allows users to access the MGS Online gaming community. Users of older version of MGS (< version 2.0) can upgrade to this version and continue to enjoy their previously installed offline player games while experience new online multiplayer games by Noumena.

The beta version of MGS 2.X will allow users to play online games for free.\* The unique features of MGS are:

- Download and play a large and expanding portfolio of fantastic 2D and 3D multiplayer games
- Find and play against other players from around the world
- Allows closer interaction with other players e.g. text chats, voice messaging during a game
- Shows players' score and ranking
- Allows automatic upgrade of MGS and download of MGS skins, in-game maps, levels, etc.
- MGS will continue to offer expanded community features in future versions

*\* Online games will need to be downloaded separately. They can be downloaded from the internet or over-the-air (OTA). Users will be responsible for their own data usage charges if downloading via OTA. Please refer to your service provider for relevant data usage fees.*

## Installation

### Hardware and software requirement

**MGS** requires the following to work properly:



1. 400KB of free memory in the phone or the memory card (such as MMC).
2. Open access to the internet. Please make sure your phone has access to the internet. Sometimes, service providers will restrict access from your phone. If this is the case, please consult with your service provider on how to set up the access point.

### Installing MGS

You may have received **MGS** on a compact disc provided by your phone provider or downloaded the game from the Internet. Please follow the instructions below:

1. Transfer the MGS file (MGS.sis) from the PC to your phone via IrDA or Bluetooth.
2. In your Messages/Inbox, open the MGS.sis file to launch the installer. Follow the instructions that are automatically prompted during the installation.
3. Once the installation is successfully completed, you will see a large **M** symbol on your phone's desktop. Launching it will bring you to the MGS Main User Interface (UI).

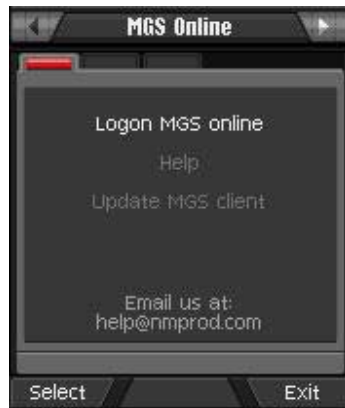
**Note: If you are synchronizing/transferring the MGS file from your PC, be sure to delete the SMS message containing the game files after installation. The installation files occupy memory and are not needed after installation.**

**Note: MMC card installation is supported, but make sure MGS and subsequent game files are installed in the same driver/location.**



## Getting Started with MGS Online

### Register



**Main UI**



**Registration UI**

1. After MGS is started, the Main UI (above left) will appear. Go to the right tabs to see the Offline games list or other Options.
2. Select "New User" and your phone will prompt you to select your access point.

*Note: MGS requires open access to the internet which is generally set up in the phone. If this is not the case, please consult your service provider.*

3. If your phone can establish a connection to the internet, then the Registration UI (above right) will appear.
4. Create user Nickname and **case-sensitive** Password in the Registration UI.
5. If registration is successful, a unique User ID and **300 game token** will be provided.

*Note: Please remember your unique User ID and Password. If lost, we can not retrieve this. However, please notify us and create a new account.*

6. Now you can login to the MGS Online games community to download and play multiplayer games.



## Login and download games

1. Select "Play Online Games" from the Main UI and the Login UI will appear (below left).
2. Select "Login" (Left Soft Key) and the phone will prompt you to select an access point.
3. Once an internet connection is successfully established, the MGS Online game list will appear (below right). The game list will show 1) games that have been downloaded and 2) games available for download.

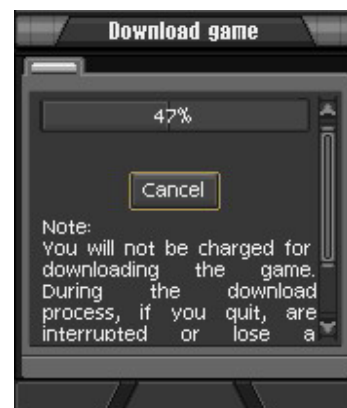


Login UI



MGS Online Games List

4. Select a game to download and a game description page will appear (below left). **Alternatively, online games can be downloaded from the internet and transferred to the phone via Bluetooth or IrDA.**



### Game Description UI

### Downloading UI

5. Select “Download” from the game description page and the download will automatically begin (above right). If the download is interrupted or disconnected, it can be re-started at the previously cut-off point.
6. Once the download is finished, the installation process will begin automatically. Follow the instructions promoted during installation. Be sure to save the game in the same location as MGS – either in the phone internal memory or on the memory card.

## Playing MGS Games

### Multiplayer Online Games

1. Selecting a game from the Online games list will take you to game Rooms (below left).
2. “Enter” a room will take you to the Game Lobby (below right).
3. Once in the game lobby, “Sit Down” at a table to join another player or wait for another player to join you. Once players are matched, the game will automatically begin.

*Note: Some games will require the player to set the rules before starting. Please select “Help” in the game lobby to see the game instructions.*



**Game Rooms**



**Game Lobby**

### Single Player Game

1. Single player games can be started in the Offline games list.



## View/Modify User Info



**Online Options UI**



**Modify User Info UI**

1. Once you have logged in to MGS Online, from the Online games list, tab right to the Online Options UI (above left).
2. Select "Modify user info" or "View user Info".

## Making a Phone Call

If you want to make a phone call or do something else, just switch out of the game by holding down the phone's Menu key which brings you to the Program Menu. The Program Menu allows you to select other programs. You need not quit the game or the MGS. After that, you can resume your game just by running MGS again. You will find that the game has remained where you left it.

## Trouble shooting

If you ever encounter a 'kernel-3' error when you attempt to start the game, it could mean that your phone memory is running low. If so, we suggest that you close all applications



that are not in use and try again. If the problem persists, then restarting your phone should eliminate the problem.

## Uninstall

To remove the game from your phone's memory, go to the Application Manager. Highlight and delete the appropriate game file names.

## How to Contact us

If you have any problems with the game or you have some suggestions, you can send us an E-mail to the following address:

[support@nmprod.com](mailto:support@nmprod.com)

or you can visit our website:

[www.nmprod.com](http://www.nmprod.com)

