

Coolchix Chinese Chess for Smart phone

Version 1.0

CONTENTS

I. How to use this manual effectively	2
II. What is Coolchix Chinese Chess	2
III. How to install Coolchix to Smart phone	2
IV. Functions.....	4
1. How to select icons on the Menu bar	4
2. How to choose Menu functions	4
3. Settings	5
4. How to open and play a new game	5
a. How to open a new game	5
b. How to move pieces	5
c. Undo	5
d. Replay.....	5
e. Table of history.....	5
f. Save/load game.....	5
5. Postured game.....	6
a. Arrange and play your own game	7
b. Download and play the postured game.....	7
6. About.....	7
7. Return	8
V. The rules	8
1. The board.....	8
2. The pieces.....	8
3. Basic rules.....	8
4. Other rules	9
VI. How to purchase and register Coolchix	10

I. How to use this manual effectively

Welcome to Coolchix Chinese Chess!

This manual consists of a brief introduction to Coolchix, the installation to Smart phone, Coolchix rules, the functions, purchase instruction and product support. All these are equally important and clearly designed.

It is advisable to read the whole manual from the beginning to the end. However, you can also spend time on the parts that are useful to you.

New Coolchix players should read the fourth and the fifth part more carefully to have a deep understanding on the rules. And how to use buttons on your Smart phone.

If you are an experienced Coolchix Chinese Chess player, please take a careful look on the fifth part!

Please read part IV and V from the beginning to the end. This will give clear instructions to you all because each subpart has close links to others.

Note: In part V, **bold letters** mean the icons in Menu bar or Menu functions. The **orange letters** are used for buttons on Smartphone keypad.

II. What is Coolchix Chinese Chess

CoolChix or **Chinese Chess** (game of elephants) is an extremely popular game in the Eastern Hemisphere. It is now the most popular board game in China, Taiwan, Thailand, Singapore, Vietnam, Hong Kong and other Asian countries. Because of the large influx of Asian immigration to Europe and North America and the recent growth of the Internet, this game has been spread out all over the world.

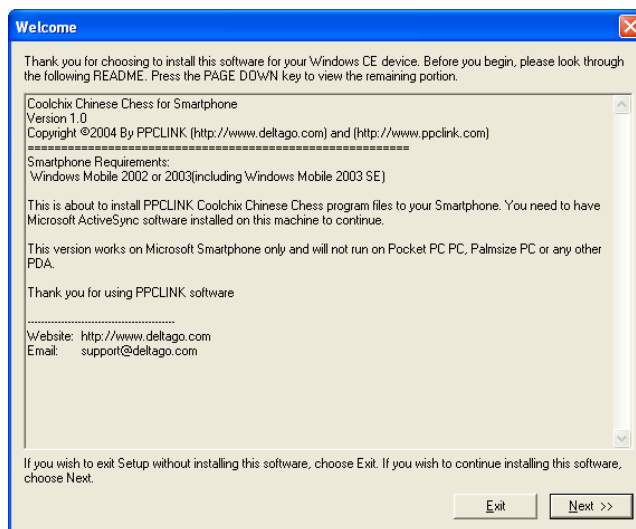
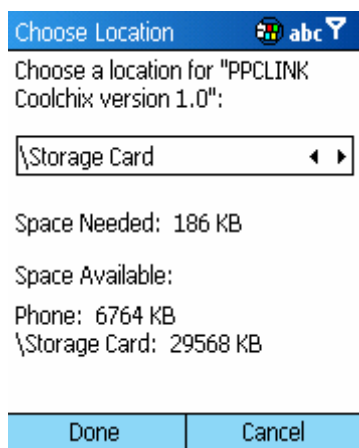
Chinese Chess contains many abstruse meanings that you will realize when you get in-depth on this kind of game and its history. On willing of making brainy relax time, we have been and will try our best to improve this product. We warmly welcome your valuable comments to make CoolChix become more popular in the world.

III. How to install Coolchix to Smartphone

Basic requirements: 200 KB free space

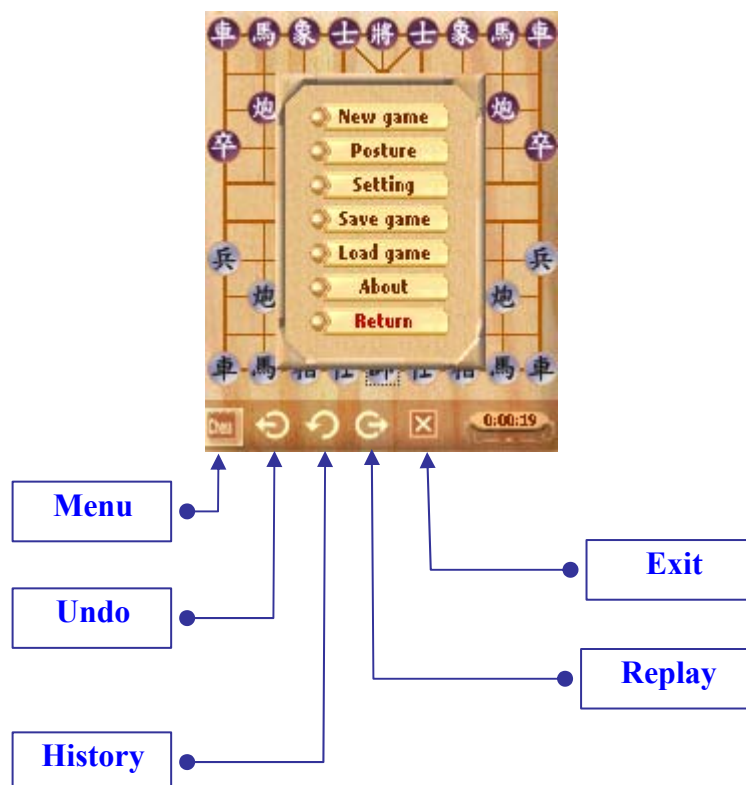
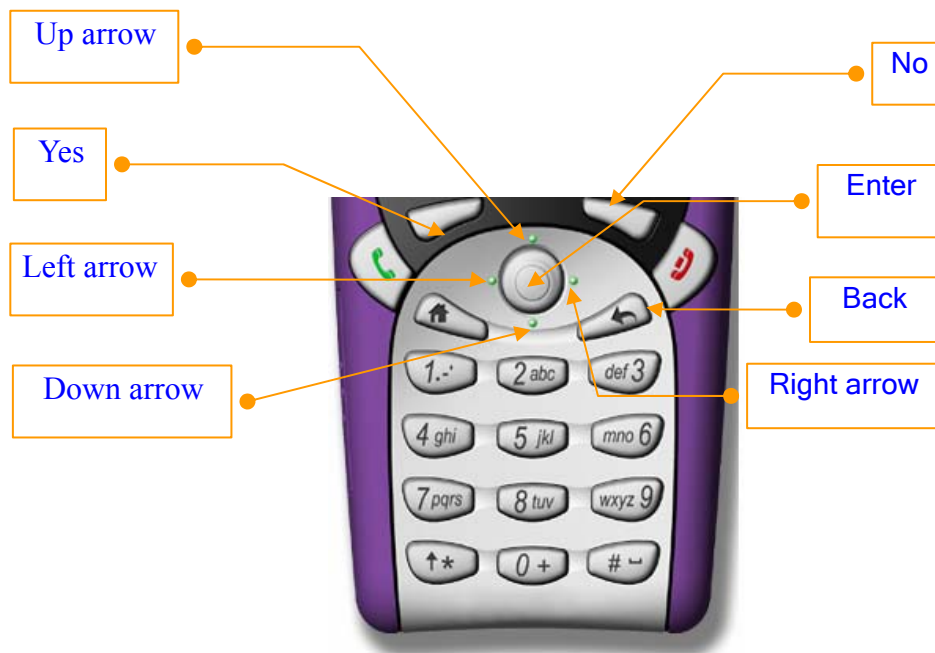
1. Download **Coolchix_Chinese_Chess_SP.ZIP** from the website to your Desktop PC and Unzip the zipped file to a folder with a zip tool. The popular unzip program is **WinZip** available at www.winzip.com , if you do not have one.
2. Start MS Active Sync and make sure that your Smartphone is connected with Desktop PC.
3. Run setup file (**coolchixsp_sp.exe**) then you will see the setup screen as:

4. Choose location: you can install Coolchix to SD card or main memory, we recommend you install it to SD Storage Card. You will see the screen as below.



5. After finished this step the game will be installed and an icon is created in Games menu, go to **Start >>Games**, you will see Icon of **Coolchix**

IV. Functions



1. How to select icons on Menu bar

After running Coolchix, you will see five icons on the Menu bar of the home screen: **Menu**, **Undo**, **History**, **Replay** and **Exit** (see above). To activate this bar, press **Yes**, then the Menu button will highlight. Use **left/right arrows** to move between them, press **Enter** to perform one.

2. How to choose Menu functions

The Menu bar consists of seven functions, namely **New game**, **Posture**, **Setting**, **Save game**, **Load game**, **About** and **Return** (see above). After going to Menu, use **up/down arrows** to switch between them, and press **Enter** if you want to select one. Select **Return** to go back the board.

3. Settings

Go to **Menu >> Setting** as the above instructions to select Chinese/Western pieces or turn sound on/off. Use **up/down arrows** to activate Pieces and Sound. Press **1, 2** on the keypad to select Pieces or sound on/off. Choose **Yes** to save the settings.

Now you can start to play Coolchix by selecting **new game**.

4. How to start and play a new game

a. How to start a new game

Go to **Menu >> New Game** as described above (**How to choose functions in the Menu**), press **up/down arrows** to activate Level/ Mode. Then select different levels (**Hard**, **Normal**, **Easy**, and **Easiest**) by pressing **1, 2, 3** or **4**, and different kinds of opponents (man or computer) by choosing **1, 2** or **3**. Finally, choose **Yes** to start a new game.

b. How to move the pieces

If you want to move any piece, take the **selection box** (surrounding one piece) to its position by pressing **arrows**, then select **Enter** to activate that piece. If you wish to undo that choice, press **Enter** again to deactivate it. Next, use **arrows** to move the piece. Finally, press **Enter** to finish the move. If not, you can press **No** to put it back to the previous position and choose another one. When the computer takes its turn, the **selection box** disappears. Please be patient and wait until it appears again (if the

computer takes a few seconds to move).

While playing, you can choose **Undo**, **History** and **Replay** by pressing **Yes** to activate the **Menu** bar. Then use **left/right arrows** to move between them. Finally, press **Enter** to select one.

c. Undo

This function allows undoing your previous move. You can follow either of these ways to select this feature:

- Press **Back**
- See **How to select icons on Menu bar** above

d. Replay

If you choose this, you will see the previous move of your opponent.

e. Table of History

To see the history of steps, choose this button, a list of previous steps will displayed. To return to the ongoing game, press **Yes** or **No**.

f. Save/Load game

Save: To store an ongoing game, go to **Menu >>Save**. Then choose **down arrows** to show the folder tree, press **left arrow** to expand it and go to child folders, press **right arrow** to collapse the tree and return the parent node, then press **Yes** to select the folder. Next, type a new file name or press **Enter** to jump into file list, **Enter** again on an existing file in the list. Finally, press **Yes** to complete. To withdraw the act, press **No**.

Load: This function allows to load a game, which has been saved before, and to solve with the game you are playing.

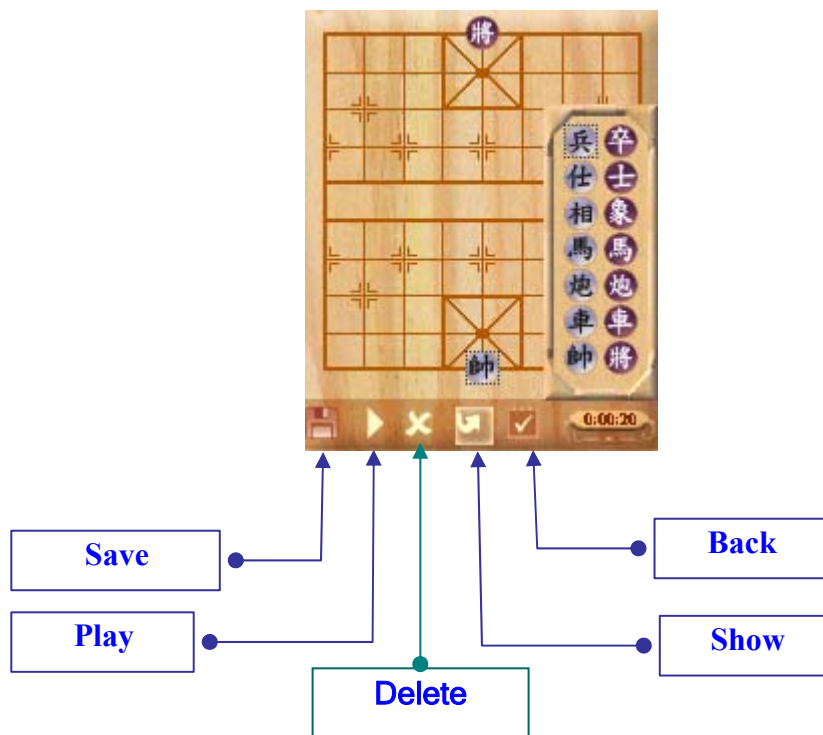
Go to **Menu>> Download** (see **How to choose functions in the Menu** and **Save** above for more information).

5. Postured game

If you like to play an arranged game, you can perform either of these ways:

- Arrange your own posture.
- Load the postured game stored in your Smartphone.

a. Arrange and how to play your own posture



To do this, you must take chess pieces and create your own posture after selecting this function.

After choosing **Menu >> Posture**, setting game mode and difficult level, you will see five icons on the **Menu** bar, namely **Save**, **Play**, **Delete**, **Show** and **Back** (see the above screenshot). Press **Yes** to highlight this bar then use **right/left arrows** to switch between these functions. To choose one, press **Enter**.

Show displays the pieces box. After choosing this, use **arrows** to move from/to pieces in the box, and press **Enter** to select the one you like or **No** to close this box. In order to put it at any place, see **How to move the pieces** above. If you want to remove the one you have chosen, just choose **Delete**. After arranging your own posture, choose **Play** to start the game.

Note: when playing your own postured game, do not put the two kings in the same line (see **Other rules** above)

Save allows you to store an ongoing postured game (See **save/load game** above for more information)

b. Load a postured game

See **save/ load game** above for more information.

6. About

See [How to choose functions in the Menu](#) above to select **About**, press **No** to return Menu functions. This function shows the registration information.

7. Return

Select this function to go back the chess board. To do this, you can press **No** button on the keypad or go to **Return** and press **Enter** to exit (see [How to choose Menu functions](#) above)

V. The rules

The Board

The CoolChix board is made up of ten horizontal lines and nine vertical lines. The verticals are interrupted by a central-horizontal void called a river. Two palaces are positioned at opposite sides of the board. Each is distinguished by a cross connecting its four corner points.

Pieces: Each player has the following pieces:

2 Rooks	(R) (or Chariots)
2 Horses	(H) (or Knights)
2 Elephants	(E) (or bishops or ministers)
2 Advisors	(A) (or mandarins or assistants or guards)
1 Kings	(K) (or generals)
2 Cannons	(C)
5 Pawns	(P) (or soldiers)

Basic Rules



The **Kings** move only one space at a time, either horizontally or vertically. Furthermore, the **Kings** must always stay within the palace, which is a square marked with an X.



The **Advisors** (Guards) move only one space at a time diagonally. Similar to the King, the guards must stay within the palace.



The **Elephants** (Ministers) move two spaces at a time diagonally (i.e. 2 spaces left/right and 2 spaces up/down in a move). They must stay within their own side of the river. If there is a piece midway between the original and final intended position of a minister, the minister is blocked and the move is not allowed.



The **Rooks** (Chariots) move one or more spaces horizontally or vertically provided that all positions between the original and final positions are empty.



The **Horses** (Knights) move two spaces horizontally and one space vertically (or respectively 2 spaces vertically and one space horizontally). If there is a piece next to the horse in the horizontal (vertical) direction, the horse is blocked and the move is not allowed.



The **Cannons** move one or more spaces horizontally or vertically like a Rook. However, in a capture move, there must be exactly one non-empty space between the original and final position. In a non-capture move, all spaces in between must be empty.



The **Pawns** (or Soldiers) move one space at a time. If a pawn does not cross the river yet, it can only move forward vertically. Once crossing the river, the pawn can also move horizontally.

Other Rules

1. The **Red** moves first.
2. **Capture**: When a piece moves to a position currently held by an opponent's piece, it captures that opponent's piece. The captured piece will be removed from the board.
3. **King's line of sight**: The two Kings in the board must never be on the same line (vertical line) without any pieces between them. A move that puts the two Kings in such a setting is illegal.
4. **King safety**: One must never leave the King to be captured by the opponent in the next move. Any moves that put the King in such a setting are illegal.
5. The game is won by checkmating or stalemating the opponent King.
6. Perpetual check is forbidden. You cannot check your opponent more than three times in a row with the same piece and same board positions.
7. You cannot force an enemy piece to move to and from the same two points, indefinitely, in order to avoid capture. If you move a Rook to e5, threatening a Cannon on e6, and your opponent's only viable move is Cannon to f6, and then you cannot force that Cannon move to and from e6 and f6 by moving your Rook to and from e5 and f5, indefinitely. The purpose of this rule (and the above rule) is to avoid perpetual-check draws. Some of these situations are complicated, but the person who is forcing the perpetual move must usually break it off.
8. The game is a draw when neither side can force a checkmate or a stalemate

VI. How to purchase and register CoolChix

You can purchase **CoolChix** at:

1. <http://www.deltago.com>
2. Handango.com
3. Pocketgear.com
4. Mobile2day.de

At these websites Coolchix is available at the same price. Anyway, the price will sometimes be a pretty alternative because of sales promotion.

If you purchase directly from our website at **deltago.com**, you will receive an account by which you can download upgrade versions, submit questions or get our direct support as well.

When you purchase directly from our website, you will get an email of 2checkout in which there is a part written “**Click here**” for **CoolChix**, please do not click on this link because it is an automatic service-mechanism of 2checkout that we use. We will send you an account by which you can login our website at: <http://www.deltago.com/?deltago=member> to get the Serial Key. In case of loss, you can re-login and take the serial key. You can get support information or frequently asked questions at our site.

Deltago Support: support@deltago.com

PPCLINK Support: support@ppclink.com

License : license@deltago.com

If you purchase at **Handango** or **PocketGear**, you will receive a serial key and support from them as well. If you get into trouble with these sites, please contact:

Handango Online form: <http://www.handango.com/CSSupport.jsp>

Support email: support@handango.com

Pocketgear Online form: <http://www.pocketgear.com/contact.asp>

Support email: support@pocketgear.com